

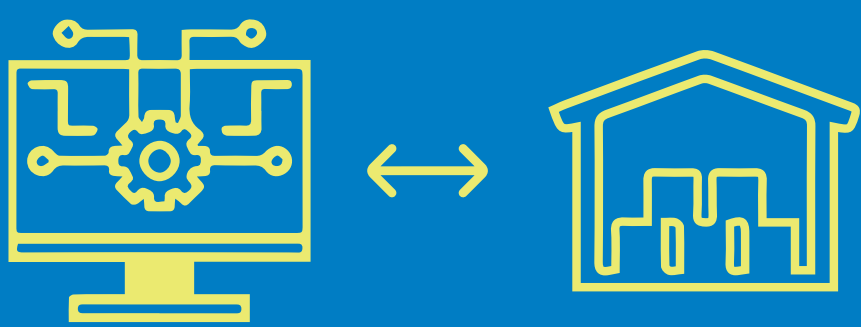
# AUTOMATED DC PROCESS RE-ENGINEERING AND IT ARCHITECTURE REDESIGN AT ANKLESHWAR



## OVERVIEW

Asian Paints is an Indian multinational paint company, headquartered in Mumbai, Maharashtra, India. The company is engaged in the business of manufacturing, selling and distribution of paints, coatings, products related to home decor, bath fittings and providing of related services.

## BUSINESS OBJECTIVE



Re-engineer the business processes through SAP EWM 9.4 Implementation at BSR Warehouse and Finished Goods (FG) DC of APL's Ankleshwar Plant



Eliminate the dependency on the Dematic Sub Driver using MFS thus improving the reliability on the ASRS

## VALUE DELIVERED



Increased hardware reliability using standard SAP MFS interface



15% reduction in ASRS load due to cross docking and improved picking and put away strategies



8% improvement in the throughput of the ASRS through improved Interleaving strategy

## BUSINESS COMPLEXITIES

Plant and DC handle highest number of the SKUs

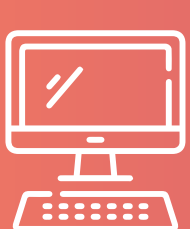
Hard constraint of PLC and telegram structures

Brownfield DC and BSR Warehouse with high business impact

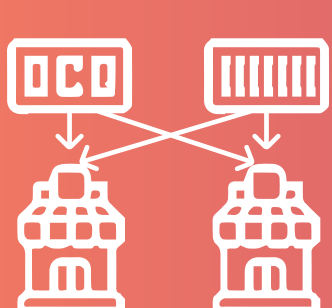
Complex outbound process with need to simulate the waves to be created for deliveries for better operations management

Need to handle ASRS and Non – ASRS storage types.

## PROJECT HIGHLIGHTS



Use of MFS to control Double Deep ASRS.



Implementation of Opportunistic Cross Docking to de-bottleneck the ASRS by up to 15% of load.



Re-design the Interleaving Strategy thus improving the ASRS throughput by 8%.



Design the picking and put away strategy based on the product classification.



Integration of the EWM with Telnet for RF HHT usage.