



TM IMPLEMENTATION

OVERVIEW

DHL is a global leader and India's most competent and largest logistics service provider that has successfully been able to provide simple, fast, reliable and 24*7 road logistics services across India through an innovative and agile approach.

220

of counties
being served

1500+



of trucks serving
customer's on-time
through long-haul
service



~1.5 Billion parcels
delivered each year
globally

VALUE DELIVERED



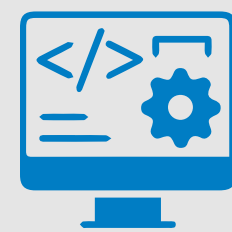
Improved SLA through Trip
Prioritization and
Optimization



Improved Asset
Utilization through
efficient planning and
reduced Driver to Truck
Ratio

200+

of orders
per day



Smarthub eases driver
assignment and expense
management



Reduced dry-run of trucks
globally minimizing
transportation costs

SOLUTION IMPROVEMENTS & ADD-ONS



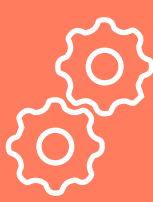
2 step optimized
planning



Petty cash
management



Fast-tag
integration



Fuel desk
automation



Invoicing for different
customer types from a
single source

SOLUTION

Contract Pricing, Creation &
Maintenance using SAP TM

Trip Planning & Scheduling
with automatic truck
assignment

Driver Rostering through
customized logic to reduce
Driver to Truck ratio and
improve Driver Utilization

Trip monitoring & Execution by
integrating TM/EM with T4U (IoT)
and FarEye (Customer App,
Operations App & Driver App) for
reporting or updating
planned/unplanned events and
live trip tracking

Settlement & Invoice
generation using SAP FICO
module taking GST into
consideration

Fleet management using SAP
PM for Asset management and
to create Fleet Maintenance
Notifications & Orders