

# EWM IMPLEMENTATION FOR

**OLA  
ELECTRIC**

## OVERVIEW

Ola Electric Future Factory is a brand-new setup manufacturing Electric Scooters. We have Implemented EWM embedded system for an efficient and optimised Warehouse. Designed a Standard feature which improves Inventory visibility, eliminates inefficient movement of Human intervention, Improves space utilisation and flexible process to cater business growth. Post EWM Implementation, the production rate was increased, and manufacturing of scooters were raised from 120 scooters to 350+ scooters. EWM Effectively manages Warehouse business processes and activities such as receiving, put away, picking, delivering, Inventory and production. Improved the efficiency of receiving general assembly via MES.



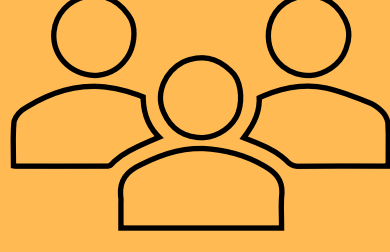
**Size**  
77,000 Sq ft.



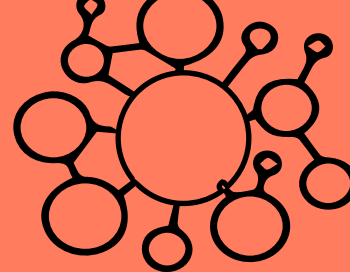
**106 cities**



**# Suppliers**  
provides goods

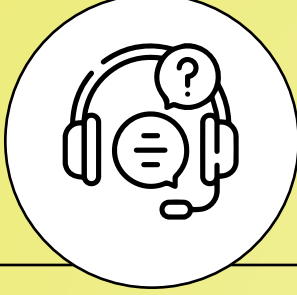


**10000+**  
associates



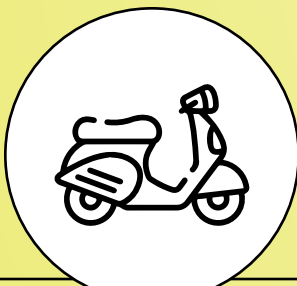
**Global Track**  
and Trace

## VALUE DELIVERED



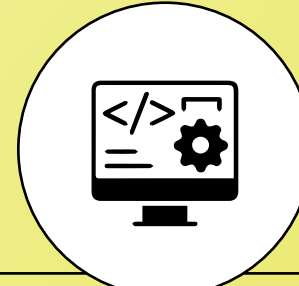
Improved SLA through  
Trip Prioritization and Optimization

Simplified global template design with  
standardized process and improved  
flexibility for a dynamic business



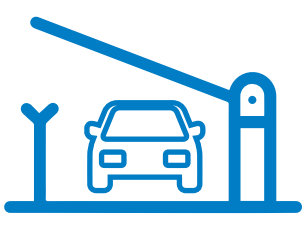
900+ scooters are produced per day

Gate-App eases driver's assignment which  
captures the information of truck and driver



Established KPI's by implementing  
warehouse insights

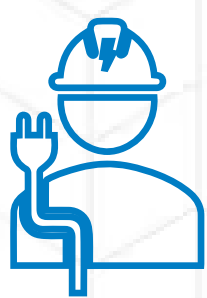
## SOLUTION IMPROVEMENTS & ADD-ONS



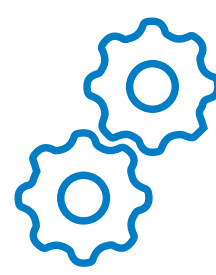
Implementation of  
Gate Application to get  
visibility of gate entry/exit



Provision of Dock  
Application to  
multipoint unload for a  
single vehicle



Production Integration



Digitized end to end  
process of warehouse  
operations with scanning  
functionality



Visibility to find the  
list of vendors

## SOLUTION

SAP S/4 Hana latest version embedded EWM with standard features to manage the Inbound Logistics of vendor and line issues to production

Accurate & faster shipping, shorten around TAT Times

The Production rate got raised 3X due to increased rate of integration in Sub-assemblies & General assembly

Overall Improvement of Picking Efficiency

Provision for refilling for full location

Provision of Receiving General Assembly via MES

GR Posting is based on the document types